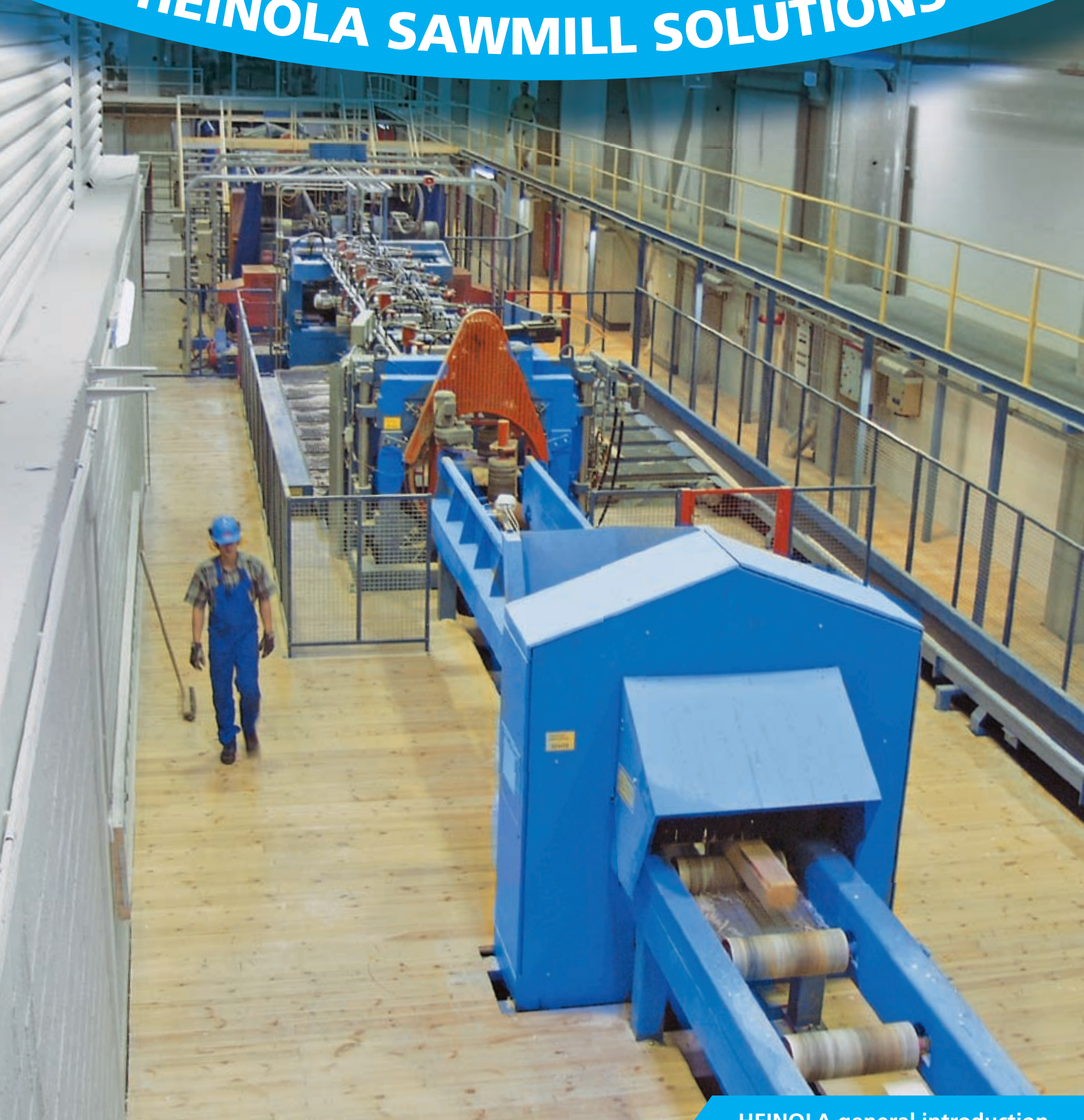


HEINOLA

HEINOLA SAWMILL SOLUTIONS

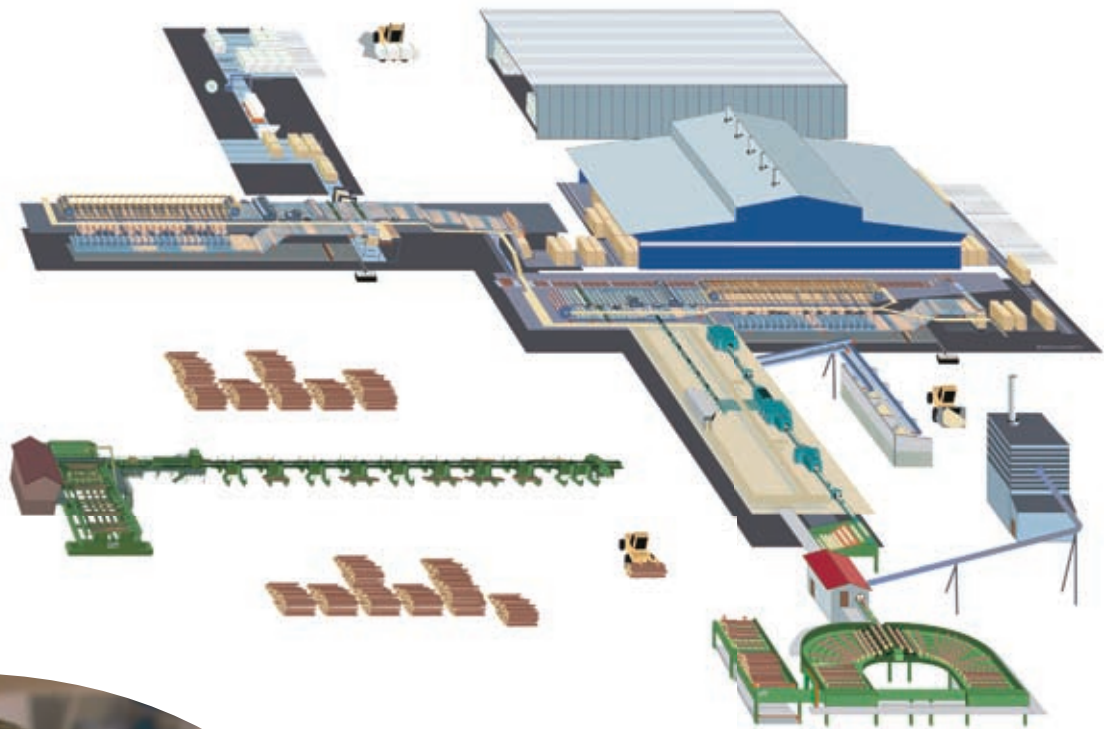


HEINOLA SAWMILL SOLUTIONS



Several decades of expertise in sawmill production processes combined into creative solutions, guarantees a skilled service to customers of Heinola Sawmill Machinery Inc's – from single machines to complete plants.

HEINOLA delivers customer-oriented, reliable and cost-effective solutions to sawmills. The delivery programme includes all the main processing requirements, with the necessary auxiliary equipment, delivered as a total turnkey solution if desired.



"When a supplier is needed that can find a customer-oriented solution for a single machine or for the processes of an entire plant, companies choose HEINOLA. We are proud of this know-how. We believe that as our customers' markets change continually, increasing use will be made of our expertise."

Juha Ropilo, Technical Manager



HEINOLA SAWLINES AND EDGERS

Heinola Sawmill Machinery Inc's know-how on sawlines is based on over one hundred years' tradition of deliveries. HEINOLA's delivery programme includes cost-effective and flexible solutions for sawlines with the necessary main machines, conveyors and equipment designed in co-operation and discussions with customers.

Robust construction, ability to produce accurately cut timber, and high-quality chips as well as maximum yield are

typical of all the machinery delivered by HEINOLA. Bandmills, circular saws, chipper canters, profiling units, curve saw equipment, scanning equipment, optimization systems and automation to effective sawlines, HEINOLA delivers them all.

The optimizing lines include also profiling, edger optimizers, board edgers, chipping board edgers, scanning equipment, optimization systems, skew edging equipment and automation.



HEINOLA LUMBER HANDLING

The individual sorting plants include green sorting, sticker stackers, dry sorting, packaging, package handling and automation.

Heinola Sawmill Machinery Inc. has invested forcefully in lumber handling technology already over 30 years. Research and development work is based on both our own know-how and acquisitions.

Lumber handling experience of the pioneering companies has been pulled together into the joint HEINOLA product programme, which probably is the widest and the most modern in the world.



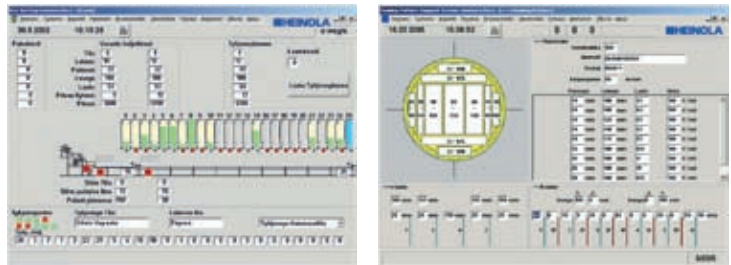
HEINOLA DRYING KILNS

HEINOLA's drying kiln solutions are based on decades of experience of the demanding timber drying production conditions in the Nordic sawmill industry. This experience and expertise ensures that our customers are able to receive individual drying kiln solutions tailored to the needs of each sawmill. Each solution is chosen based on the needs of the customer, their capacity and quality. The possibility of future expansion is always taken into account when designing the solution.

HEINOLA AUTOMATION

Heinola Sawmill Machinery Inc. is a company with over 20 years of experience as a supplier of real-time bulk automation. A modern sawmill sets ever-increasing requirements for the flexibility, usability and efficiency of the control systems. As a result of continuous R & D we have purposefully created new automation systems for sawmills.

These systems include line control, scanning equipment, setworks, optimization, package registers as well as reports on production and disturbances.



HEINOLA CHIPPERS

Heinola Sawmill Machinery Inc. is one of the leading chipper manufacturers in Europe. The history of HEINOLA chipper product range is based on the know-how of several well-known manufacturers. For production of high-quality pulp chips and homogenous energy chips, HEINOLA delivers both drum and disc chippers. The stationary ones for static plants, and the mobile ones for outdoors.

HEINOLA SERVICE

Both the mechanical and the automation maintenance, as well as spare parts supply are important factors of production; malfunctions can be prevented and productivity increased. Heinola Sawmill Machinery Inc. maintains an extensive store of spare parts in order to provide original spare parts to its customers worldwide quickly and reliably.

Fast and professional maintenance services provide equipment and contract maintenance, spare parts, upgrades and consultancy.



HEINOLA SAWMILL SOLUTIONS

AROUND THE WORLD

- HEINOLA
- DELIVERY





"To work in HEINOLA is being part of several decades acquiring knowledge, experience and responsibility. Our company responds to our customers needs with innovative technology. We in HEINOLA believe that it is possible to find the solutions in our changing world."

Kari Kiiskinen, Managing Director

HEINOLA SAWMILL SOLUTIONS
SAWLINES • EDGERS • LUMBER HANDLING •
DRYING KILNS • CHIPPERS • AUTOMATION • SERVICE

 **HEINOLA**

Heinola Sawmill Machinery Inc • P.O.Box 24, FIN-18101 Heinola, FINLAND
Tel. +358 3 848 411, fax +358 3 848 4301 • www.heinolasm.com